

2024 - 25

LEADERSHIP DIRECTORY

HFMA's annual listing of its national, examiner, regional and chapter leaders



CHAIR

Marc B. Scher
FHFMA, CPA
Former Partner
KPMG LLP



CHAIR-ELECT

Kiran N. Batheja
FHFMA
Director, Patient Registration
and Financial Counseling
University Hospital
Newark, N.J.



SECRETARY/TREASURER

Matthew E. Cox
FHFMA, CHFPA, CPA
Executive Vice President and CFO
Corewell Health
Grand Rapids, Mich.



PRESIDENT/CEO

C. Ann Jordan
JD
Healthcare Financial
Management Association
Downers Grove, Ill.

NATIONAL BOARD OF DIRECTORS

TERMS EXPIRE 2025



**Carladenise Armbrister
Edwards**
PhD
Strategic Advisor
Detroit, Mich.



David W. Johnson
CEO
4sight Health
Chicago, Ill.



Marcus Whitney
Founder and Managing Partner
Jumpstart Nova
Nashville, Tenn.

TERMS EXPIRE 2026



Nikki Harper
FHFMA
Chair, Revenue Cycle-
Analytics Automation &
Diversified Revenue
Mayo Clinic
Rochester, Minn.



Scott R. Hawig
CPA
Executive Vice President
of Finance, Chief Financial
and Administrative
Officer and Treasurer
Froedtert ThedaCare Health
Milwaukee, Wis.



Susan K. Nelson
CPA
Executive Vice
President and CFO
MedStar Health, Inc.
Columbia, Md.

TERMS EXPIRE 2027



Robin Damschroder
Executive Vice President and
Chief Financial and Business
Development Officer
Henry Ford Health
Detroit, Mich.



J. Kevin Holloran
CHFP, MHSA
Senior Director,
U.S. Public Finance
Fitch Ratings
Allen, Texas



Deepak Sadagopan
MHCDS
Chief Operating Officer,
Population Health
Providence
Renton, Wash.

BOARD OF EXAMINERS



David Bittner
FHFMA, CPA

Vice President/Chief
Revenue Officer
Trinity Health
Livonia, Mich.



Cherise Bridgwater
CHFP, MBA, FACHE

Director, Accreditation
and Operations; Lecturer,
Healthcare Finance
Baylor University
Waco, Texas



Daniel Brown
JD, CHFP, CPA

Associate Dean for Finance
and Administration
UTHSC College of Dentistry
Memphis, Tenn.



David M. Karluk
FHFMA, CRCR

Director, Financial Planning
and Analysis (Retired)
Mary Washington Healthcare
Glen Allen, Va.



Michele M. McGowan
DBA, FHFMA, CPA

Professor and Graduate Program
Director, Healthcare Administration
William G. McGowan School
of Business, King's College
Wilkes-Barre, Pa.



Michele Mecomonaco
FHFMA, CPA

Regional Director of Reimbursement
Trinity Health
Syracuse, N.Y.



Jason Metcalf
FHFMA

Division Director, Corporate
Revenue Cycle
CommonSpirit Health
Prescott, Ariz.



Pamela Ott
FHFMA, CRCR, CPA, FACHE

CFO
Franciscan Alliance
Hammond, Ind.



Barbara Townsend
FHFMA, CRCR, CPC, CPB

Regional Director of Revenue Cycle
McLaren Health Care
Shelby Township, Mich.

NATIONAL ADVISORY COUNCIL



Tracy Belsan
DSL, MBA

CEO
Boomerang Healthcare
Walnut Creek, Calif.



Alyson W. Belz
FHFMA, MBA, MS

Executive Director,
RCM Services
Optum
New York, N.Y.



Alexander Ding
MD, MBA

Vice President,
Physician Strategy
Humana
Louisville, Ky.



Heather Dunn
CHFP, CRCR, MBA

President
The SSI Group
Mobile, Ala.



Byron Gabbard

CFO
Appalachian Regional
Healthcare
Lexington, Ky.



Prabhjot K. Grewal
CHFP, CRCR, MHA

Vice President,
Revenue Cycle
Montefiore Health System
Tarrytown, N.Y.



Lee J. Handke
PharmD, MBA

CEO
Nebraska Health Network
Omaha, Neb.



Beth A. King
CPA, MHA

CEO
Jersey Community Hospital
Jerseyville, Ill.



Jeff Logan

Founder and CEO
PelorusHX
Camarillo, Calif.



Sandy Lood
MSML

Vice President,
Revenue Cycle
Cottage Health
Santa Barbara, Calif.



Praveen Mekala
FHFMA, CRCR, CSAF,
MBA, MPH

Vice President,
Network Finance
WMCHHealth Network
Westchester, N.Y.



Adrienne Moore
DrPH, FACHE, MBA

Senior Vice President
of Finance
Banner Health
Phoenix, Ariz.



Kyle Naismith
EHRC, CHFP, CRCR, MBA,
CPA, FPAC
CFO
ReproTech, LLC
West Linn, Ore.



Dominic Nakis
MBA, CPA
Executive Consultant
Chicago, Ill.



Larami Oliver
CSPPM, CRCR
Director of Revenue Cycle
Heart and Vascular Care
Cumming, Ga.



Jeff Porter
Vice President, Chief
Revenue Officer
UPMC
Pittsburgh, Pa.



Mary Beth Remorenko
Vice President, Revenue
Cycle Operations
Mass General Brigham
Somerville, Mass.



Brian Restivo
CHFP, MBA
Director, Healthcare
Consulting
Baker Tilly
Columbus, Ohio



LuCinda Rider
CHFP, MBA
Vice President/CFO
UHS Delaware Valley
Hospital, Inc.
Walton, N.Y.



Kimberly Scaccia
Vice President,
Revenue Cycle
Mercyhealth
Janesville, Wis.



Sarah Scher
JD, CHFP
CEO
Cooperative of American
Physicians, Inc.
Los Angeles, Calif.



Monica L. Schmude
President
Virginia Anthem Blue
Cross and Blue Shield
Richmond, Va.



Brian Sweatman
FSA, MAAA, MBA
Principal & Consulting
Actuary
Milliman
Atlanta, Ga.



Ryan Thompson
Chief Revenue
Cycle Officer
Providence Health
Irving, Texas

REGIONAL EXECUTIVES

REGION 1



Deb Wilson
CPA

Consultant/Retired
Hospital President/CEO
Reading, Mass.

REGION 2



Katie Taylor
FHFMA, CRCR

Senior Director, Patient
Financial Services
Huron Consulting
Fulton, N.Y.

REGION 3



Richard Nagy
FHFMA

Vice President of
Managed Care
Allegheny Health Network
Beaver Falls, Pa.

REGION 4



Jill Griffith-Goodwin
CPA, CPC

Managing Director
Forvis Mazars
Bloomington, W.Va.

REGION 5



Bridget Cutchen

Associate Director,
Revenue Cycle Operations
Emory Healthcare
Atlanta, Ga.

REGION 6



Nancy Rocker
FHFMA

Retired
Ann Arbor, Mich.

REGION 7



Jessica Yard
EHRC, CSBI, CRCR

Vice President, Operations
Healthfuse
Cape Coral, Fla.

REGION 8



Geoffrey Knobloch
CPA, CGMA

Partner
Eide Bailly LLP
Sioux Falls, S.D.

REGION 9



Jorge Fernandez

Regional Vice President,
Business Development
Knowtion Health
Flower Mound, Texas

REGION 10



Lisa Kirk

Vice President, Sales
Professional Credit
Boring, Ore.

REGION 11



Jeffrey Johnson

Chief Client Officer
Professional Credit
Springfield, Ore.

CHAPTER PRESIDENTS

REGION 1

CONNECTICUT



Paul Krsiak

Supervisor, Business Intelligence
Middlesex Hospital
Madison, Conn.

MASSACHUSETTS/RHODE ISLAND



Patrick McDonough

Vice President,
Business Development
PROMEDICAL
Lexington, Mass.

NORTHERN NEW ENGLAND



Zachary Colby
CRCR

Patient Financial
Services Manager
North Country Healthcare
Whitefield, N.H.

EMPIRE NEW YORK



Sarah Brainard

Vice President of
Product, Self Pay
Office Ally
Kingston, N.Y.

REGION 2

METROPOLITAN NEW YORK



Shivam Sohan
FHFMA, CRCR

Administrator,
Revenue Cycle
Catholic Health Services of
Long Island-Saint Francis
Hospital & Heart Center
Port Washington, N.Y.

ROCHESTER REGIONAL



Brenden Mance
FHFMA, CSBI

Director of Decision
Support and Strategy
Lifetime Assistance
Fairport, N.Y.

PUERTO RICO



Lymari Colón

CFO
Mennonite Health System
Cidra, Puerto Rico

CENTRAL PENNSYLVANIA



Jonathan Shedlock
FHFMA, CRCR, CSAF,
CSPPM, CSBI

Associate Vice President
of Revenue Cycle
Evangelical Community
Hospital
Camp Hill, Pa.

REGION 3

METROPOLITAN PHILADELPHIA



William Cogliano
FHFMA

Director, Strategic
Planning and Business
Development
Cooper University
Health Care
Camden, N.J.

NEW JERSEY



Maria Facciponti
FHFMA, EHRC, CRCR

Executive Director
Elevate Patient
Financial Solutions
Monroe Township, N.J.

NORTHEASTERN PENNSYLVANIA



Michele McGowan
DBA, FHFMA, CPA

Professor and Graduate
Program Director,
Healthcare Administration
William G. McGowan
School of Business,
King's College
Wilkes-Barre, Pa.

WESTERN PENNSYLVANIA



Ryan Thompson

Director, Financial
Compliance
UPMC
Pittsburgh, Pa.

CHAPTER PRESIDENTS (CONTINUED)

REGION 4

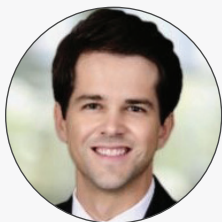
KENTUCKY



Mark Daffer

Board President
Blue & Co., LLC
Louisville, Ky.

MARYLAND



Arin Foreman

Vice President, Deputy
Chief of Staff
CareFirst BlueCross
BlueShield
Ellicott City, Md.

NORTH CAROLINA



Jason Nelms

Vice President,
Revenue Cycle
Cone Health
Greensboro, N.C.

VIRGINIA-WASHINGTON, D.C.



Karen Garner
FHFMA, MBA

Senior Director,
Reimbursement &
Financial Analysis
WellSpan Health
Virginia Beach, Va.

WEST VIRGINIA



Amy Kirk

Manager
Brown, Edwards &
Company, LLP
Bluefield, W.Va.

ALABAMA



Brandy Simpson

Vice President,
Revenue Optimization
Amplify RCM
Huntsville, Ala.

FLORIDA



Misty Davis

Senior Vice President,
Sales/Marketing
C3 Revenue Cycle
Solutions
Cape Coral, Fla.

GEORGIA



Monica Agate

Vice President,
Strategic Accounts
RevSpring
Orlando, Fla.

REGION 5

SOUTH CAROLINA



Taylor Searfoss
FHFMA, MSPH

Vice President
Ni2 Health
Nolensville, Tenn.

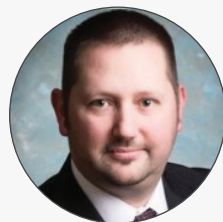
TENNESSEE



Misty Brackett
FHFMA

Vice President,
Revenue Cycle
Erlanger Health System
Ooltewah, Tenn.

MICHIGAN GREAT LAKES



Michael Felczak
FHFMA

Senior Manager
Plante Moran
New Baltimore, Mich.

CENTRAL OHIO



Kayla Howell
CRCR

Vice President, Business
Development
Revecore
Franklin, Tenn.

REGION 6

REGION 6 continued

NORTHEAST OHIO



Deborah Slogar
CPA

Finance Director
University Hospitals
Cleveland, Ohio

NORTHWEST OHIO



Chris Lovette

Director of Finance
Wood County Hospital
Bowling Green, Ohio

SOUTHWESTERN OHIO



Daniel Hosey

Chief Business
Development Officer
NYX Health - Anesthesia
Dynamics
Maineville, Ohio

REGION 7

FIRST ILLINOIS



Matthew Aumick
CHFP, CPA

Controller
US Acute Care Solutions
Chicago, Ill.

GREATER ILLINOIS



Ryan Caldwell
FHFMA

Partner
RSM US LLP
Springfield, Ill.

INDIANA PRESSLER MEMORIAL



J Hopkins
MPA

Senior Vice President
ClaimAid Consulting
Fishers, Ind.

WISCONSIN



Brittany Tillman

Midwest Refunds
Manager
Advocate Health
West Bend, Wis.

REGION 8

GREATER HEARTLAND



Paula Littleton
CSMC, CHFP

CFO
Lake Regional
Health System
Osage Beach, Mo.

IOWA



Jaiden Ellenwood
FHFMA, CSPR, MBA, CPA

Assurance Senior Manager
Eide Bailly LLP
Omaha, Neb.

MINNESOTA



Courtney McNamee
EHRC, CRCR

Director of Payer
Revenue Management
and Patient Services
Altru Health System
Detroit Lakes, Minn.

NEBRASKA



Sheila Augustine
FHFMA

Director of Health
Information Management
and Revenue Integrity
Nebraska Medicine
Omaha, Neb.

NORTH DAKOTA



Derek Schaff
FHFMA, CPA

CFO/COO
Linton Regional
Medical Center
Linton, N.D.

CHAPTER PRESIDENTS (CONTINUED)

SOUTH DAKOTA



Cory Van Maanen
CPA

Partner
Eide Bailly LLP
Sioux Falls, S.D.

SUNFLOWER (KANSAS)



Liz Murphy

Patient Access Manager
Community
HealthCare System
Onaga, Kan.

REGION 9

ARKANSAS



Melodie Colwell

Consultant
Stroudwater Associates
Monticello, Ark.

LONE STAR



Jamie Hill-Walters

Chief Customer Officer
Janus Health
Dallas, Texas

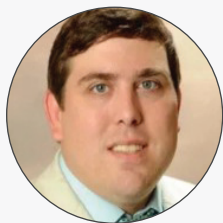
LOUISIANA



Corinna Goron
FHFMA

President
Healthcare
Reimbursement Services
Plano, Texas

MISSISSIPPI



James Woodward

CFO
Winston Medical Center
Louisville, Miss.

OKLAHOMA



Phillip Smith

Vice President, Healthcare
Practice Leader
INSURICA
Oklahoma City, Okla.

SOUTH TEXAS



Rachel Pugliano
CRCA, RHIT

Director
Eide Bailly LLP
Minneapolis, Minn.

TEXAS GULF COAST

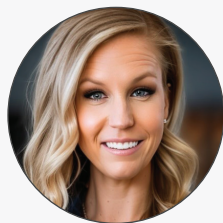


Anna Stevens
FHFMA, CPA

Partner-in-Charge
Weaver
The Woodlands, Texas

REGION 10

ARIZONA



Kelly Bauer
FHFMA

Director
Centauri Health Solutions
Phoenix, Ariz.

COLORADO



Svenja Koroll

Business Manager
UCHealth
Denver, Colo.

IDAHO



Bray Manderson

Senior Vice
President, Sales
Aspirion
Columbus, Ga.

REGION 10 continued

MONTANA



Tricia Wagner

Revenue Cycle Director
Community Hospital
of Anaconda
Anaconda, Mont.

NEW MEXICO



Will Sanders

Regional Operations
Manager
Planned Parenthood of
the Rocky Mountains
Denver, Colo.

UTAH



Brandon Creswell

Finance Director
University of Utah Health
Salt Lake City, Utah

WYOMING



Tami Love

CFO
Memorial Hospital of
Sweetwater County
Rock Springs, Wyo.

REGION 11

HAWAII



Brenda Parinas

Supervisor, Revenue Cycle/
Patient Accounts, Front
Kaiser Permanente
Honolulu, Hawaii

NEVADA



Hailee Long

Healthcare Executive
Kidney Specialists of
Southern Nevada
Las Vegas, Nev.

NORTHERN CALIFORNIA



Don Briones
FHFMA

Managing Director
FTI Consulting
San Francisco, Calif.

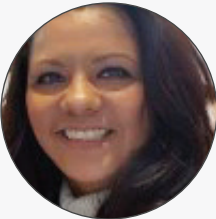
OREGON



Amanda De Los Reyes
CRCA

Vice President,
Revenue Cycle
Valleywise Health
Tempe, Ariz.

SAN DIEGO-IMPERIAL



Violeta Aguirre

Manager, Revenue Cycle
Scripps Health
Chula Vista, Calif.

SOUTHERN CALIFORNIA



Brian Mattson

Principal
Mattson Consulting
Oak Park, Calif.

WASHINGTON/ALASKA



Ann Peterson
FHFMA

Ambulatory Services
Financial Officer
EvergreenHealth
Kirkland, Wash.